



**Samaria Views Estate**  
Lomandra Way, Mansfield  
Lot 52

**Facade:** Somerset

**House:** 26.51 sq **Land:** 2503 m2

4 2 2 2

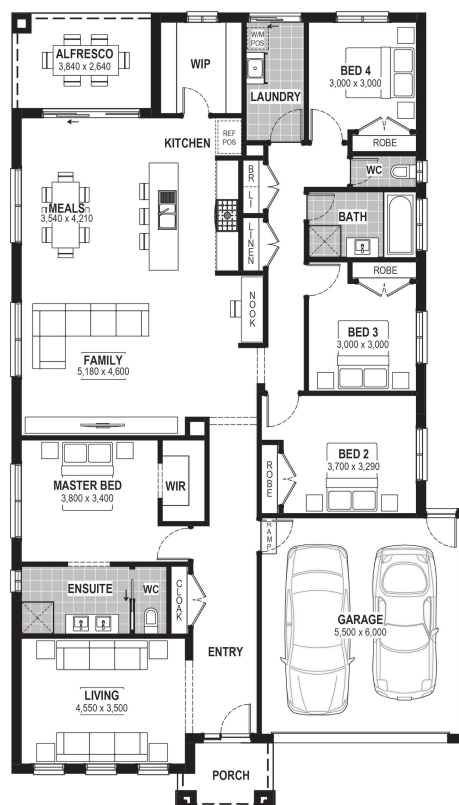
## Belmore 27

### Inclusions

- Bluescope Steel House Frame
- Colorbond Roof with Sarking
- 7 Star Energy Efficient
- European-styled (uPVC) Double Glazed Windows & Doors
- 900mm Rangehood & Upright Cooker
- Overhead Cupboards to Kitchen
- Professional Colour Consultation
- Tiled Shower Bases
- Window Locks to all Openable Windows
- Remote Garage Door with Openers
- Bushfire Compliance up to BAL 12.5
- 50 Year Structural Guarantee
- Cooling
- Laminate Flooring & Carpet Throughout
- Site Costs Allowance Included

### Contact:

Kelly Ferguson  
0499 002 583  
houseandland@jgking.com.au



\*Conditions apply. Speak to your New Home Advisor for further details